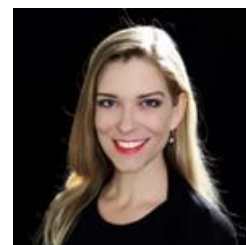


Kerry Halferty Hardy

Lecturer and consultant



A lecturer and consultant, Kerry is passionately interested in ideas that unleash innovation, promote wellness, and strengthen civil society. Her varied career has spanned the public, private, and non-profit sectors, with a particular emphasis on the policy and healthcare fields. She created and lectured in a course in nonprofits and civil society for a Business and Diplomacy MBA program, and lectures internationally on innovation, entrepreneurship and the policies and conditions that help promote them. Both in her work at the American Hospital of Paris and currently with the European Organization for Research and Treatment of Cancer, Kerry is fascinated by the potential for innovation in healthcare, as it pertains to delivery models and prevention, as well as to technological advances. Both as a consultant and as a board member, Kerry has advised companies and international NGOs on strategic planning, outreach, effective metrics, and mission fulfillment. A Texan based in Paris and Brussels, Kerry is a fellow at HITLAB (the Healthcare Innovation Technology Lab) and the Berlinbased Institut für Unternehmerische Freiheit, and is actively engaged on several boards, including the Competitive Enterprise Institute and the Institute for Economic Studies Europe. She holds a BA in German studies and an MS in Management with a concentration on nonprofit organizations and associations.